

路徑封閉通告

更新日期 2025/10/06
Updated on

Trail Closure Notice

因颱風和暴雨引致樹木倒塌，城門郊野公園部分林道及山徑需暫時封閉以作清理及維修，直至另行通知。不便之處，敬請原諒。

Due to fallen trees caused by typhoon and rainstorm, certain forest tracks and trails within Shing Mun Country Park are temporarily closed for maintenance until further notice. Sorry for any inconvenience caused.

封閉路徑

Closed trail

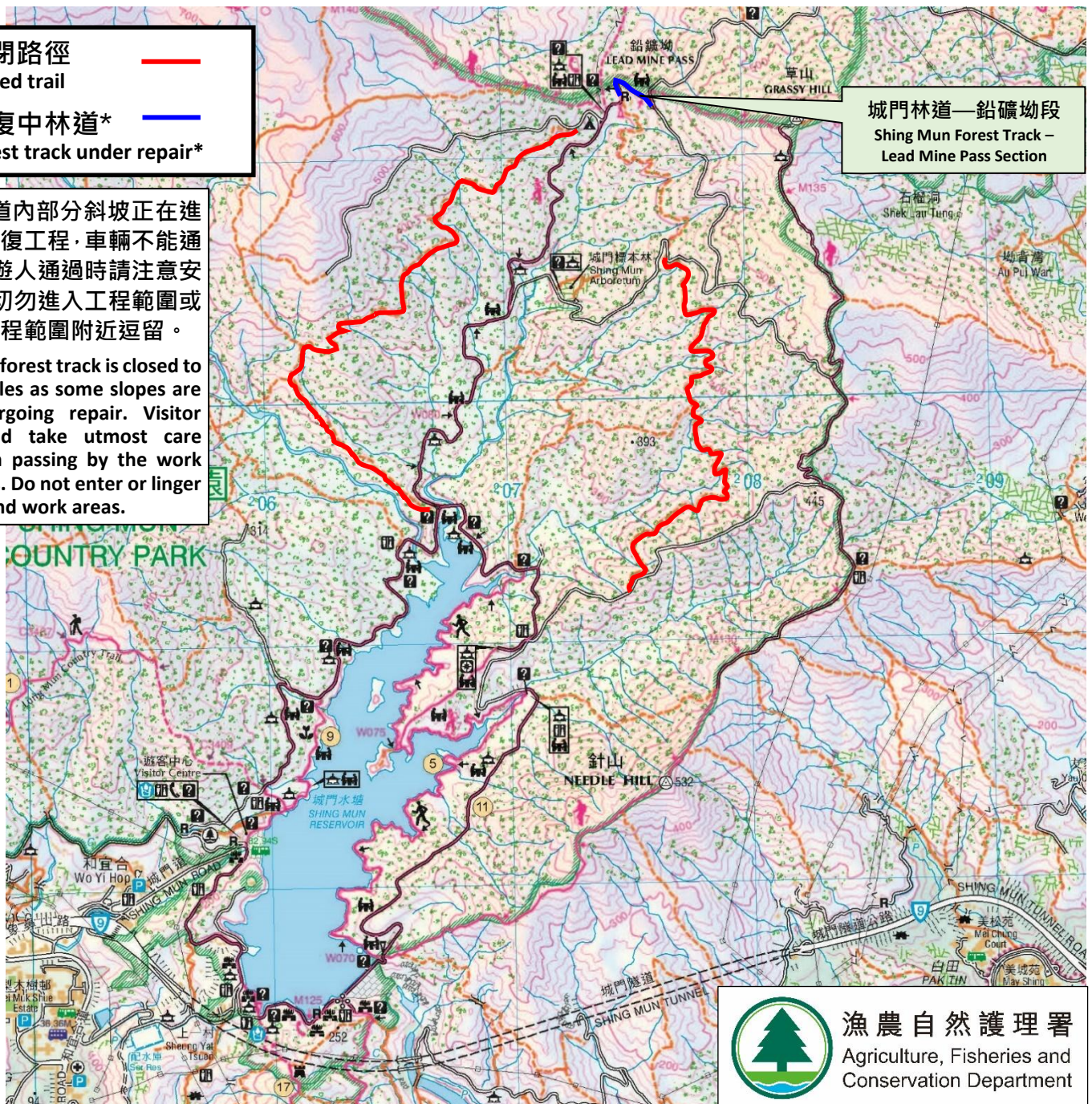
修復中林道*

Forest track under repair*

*林道內部分斜坡正在進行修復工程，車輛不能通過。遊人通過時請注意安全，切勿進入工程範圍或在工程範圍附近逗留。

*The forest track is closed to vehicles as some slopes are undergoing repair. Visitor should take utmost care when passing by the work areas. Do not enter or linger around work areas.

城門林道—鉛礦坳段
Shing Mun Forest Track –
Lead Mine Pass Section



漁農自然護理署
Agriculture, Fisheries and
Conservation Department